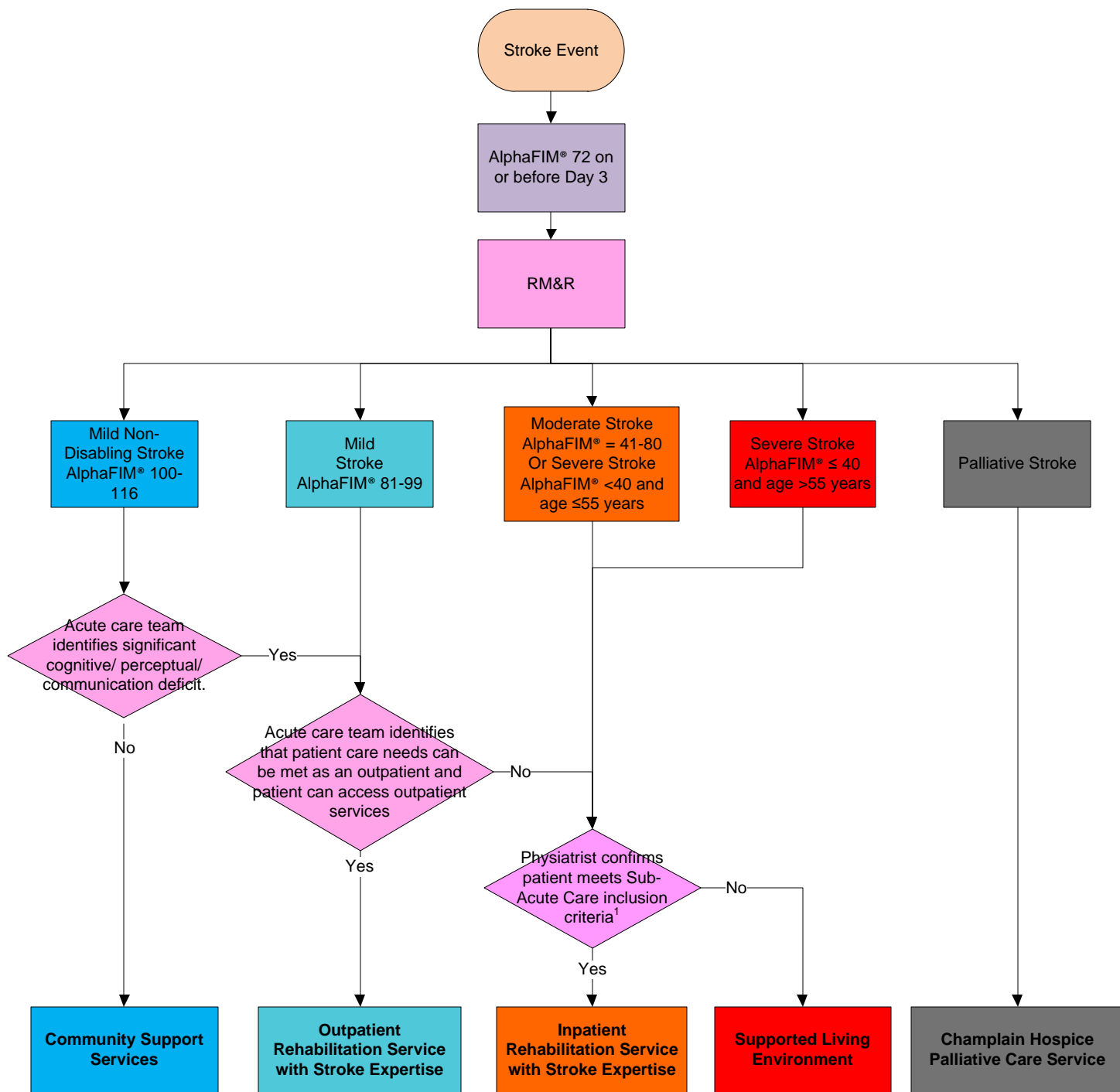


The following future state process map for the Champlain Regional Stroke Rehabilitation System defines publicly funded sub-acute stroke service tiers with consistent and regionally defined admission criteria (Figure 9).

Figure 9



1. If inclusion criteria are not met secondary to medical instability then the patient will be reassessed by the physiatrist within 72 hours of the acute care team confirming a stable medical status.